

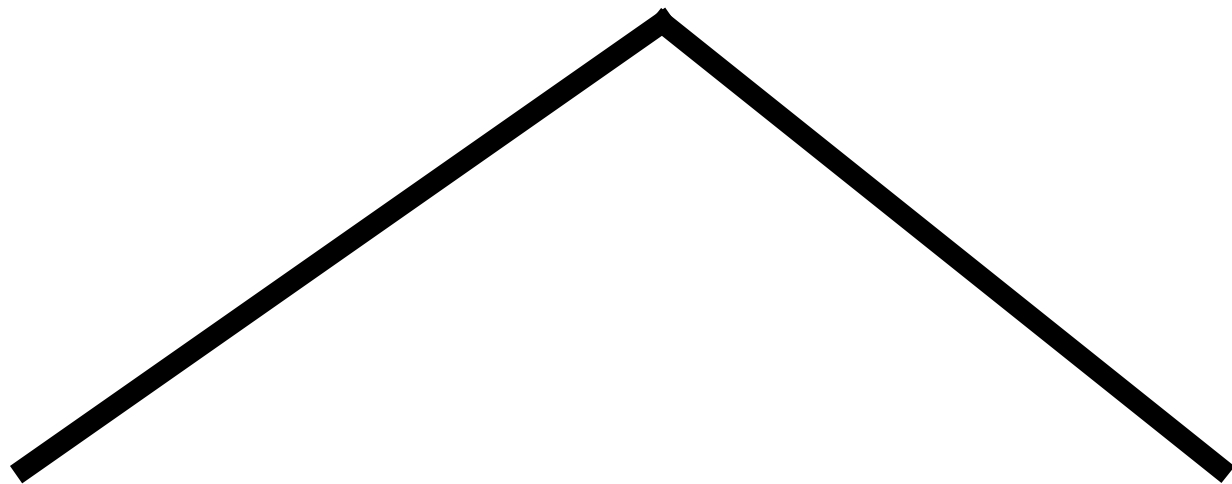
No long-lag morphological priming for Mandarin monosyllables

Stephen Politzer-Ahles, Lei Pan, & Jueyao Lin

The Hong Kong Polytechnic University

Architectures & Mechanisms for Language Processing – Asia
University of Hyderabad, 1-3 February 2018

/shi^{Low}/



[shi^{Low}]

[shi^{Rising}]

hunter

washing

bl~~o~~sh

table

thurl

drem

hunt

doctor

washing

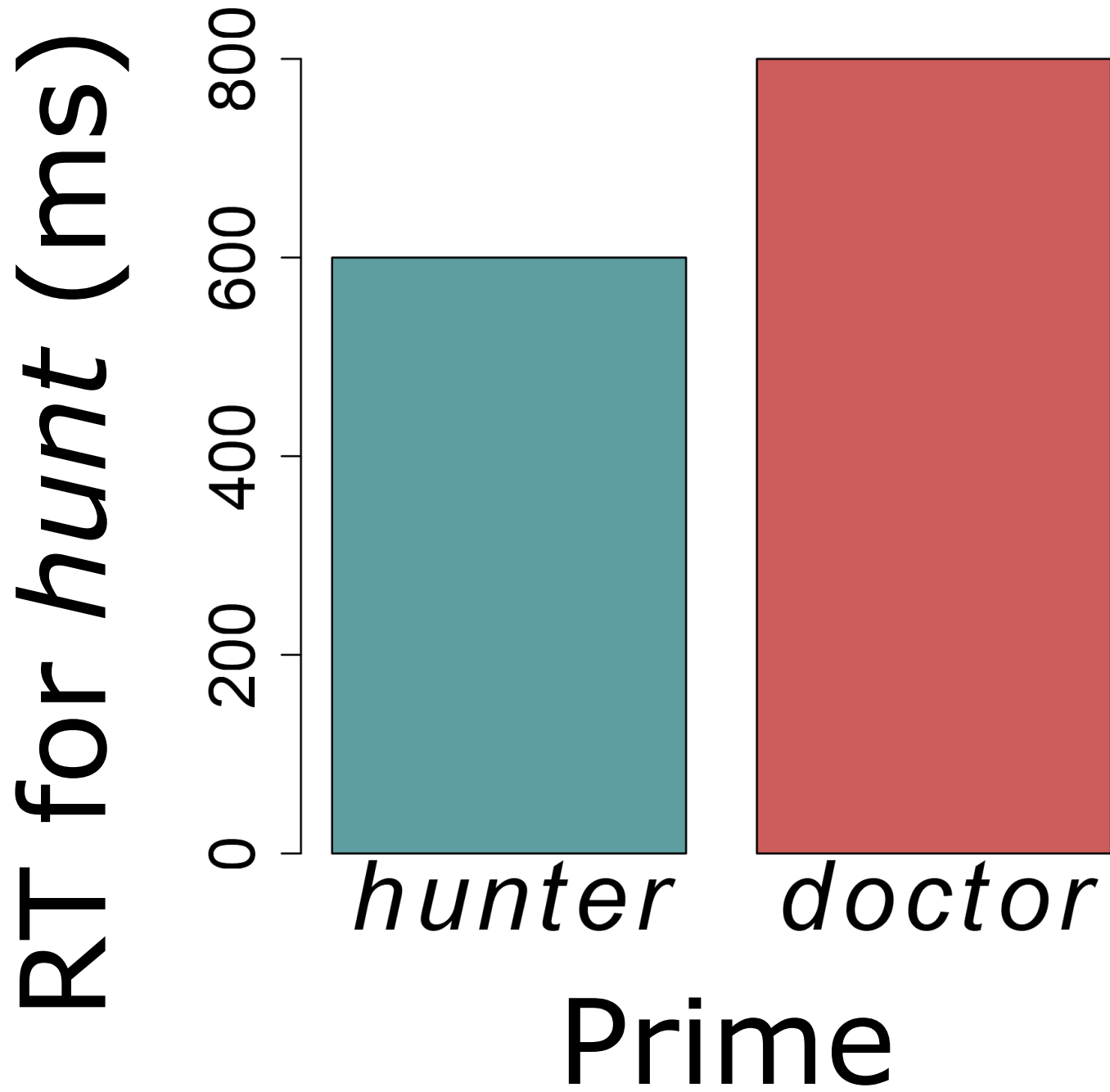
bl~~o~~sh

table

thurl

drem

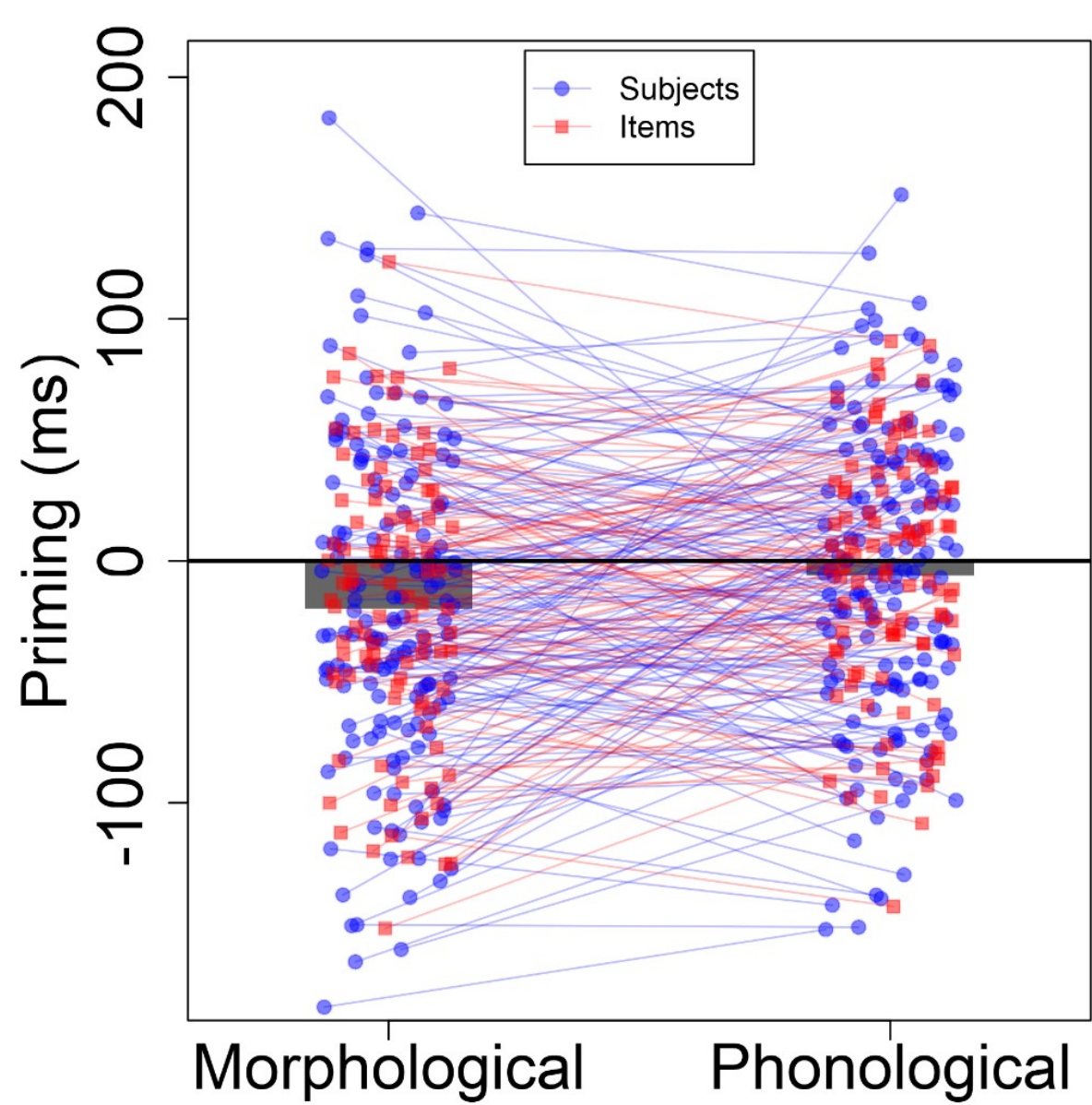
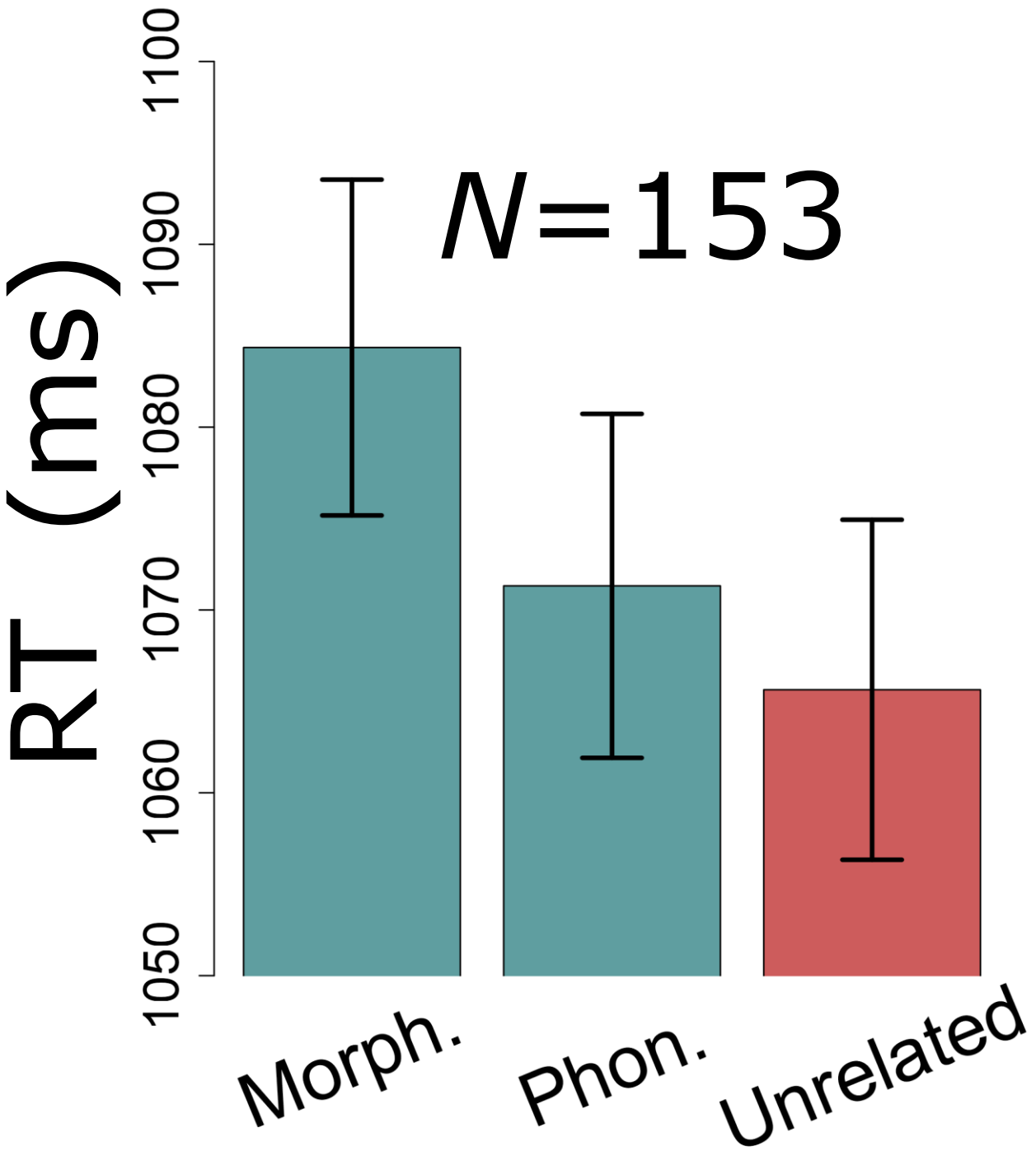
hunt



• *shi*^{Rising} ... *shi*^{Low}

• *shi*^{High} ... *shi*^{Low}

• *hua*^{Falling} ... *shi*^{Low}



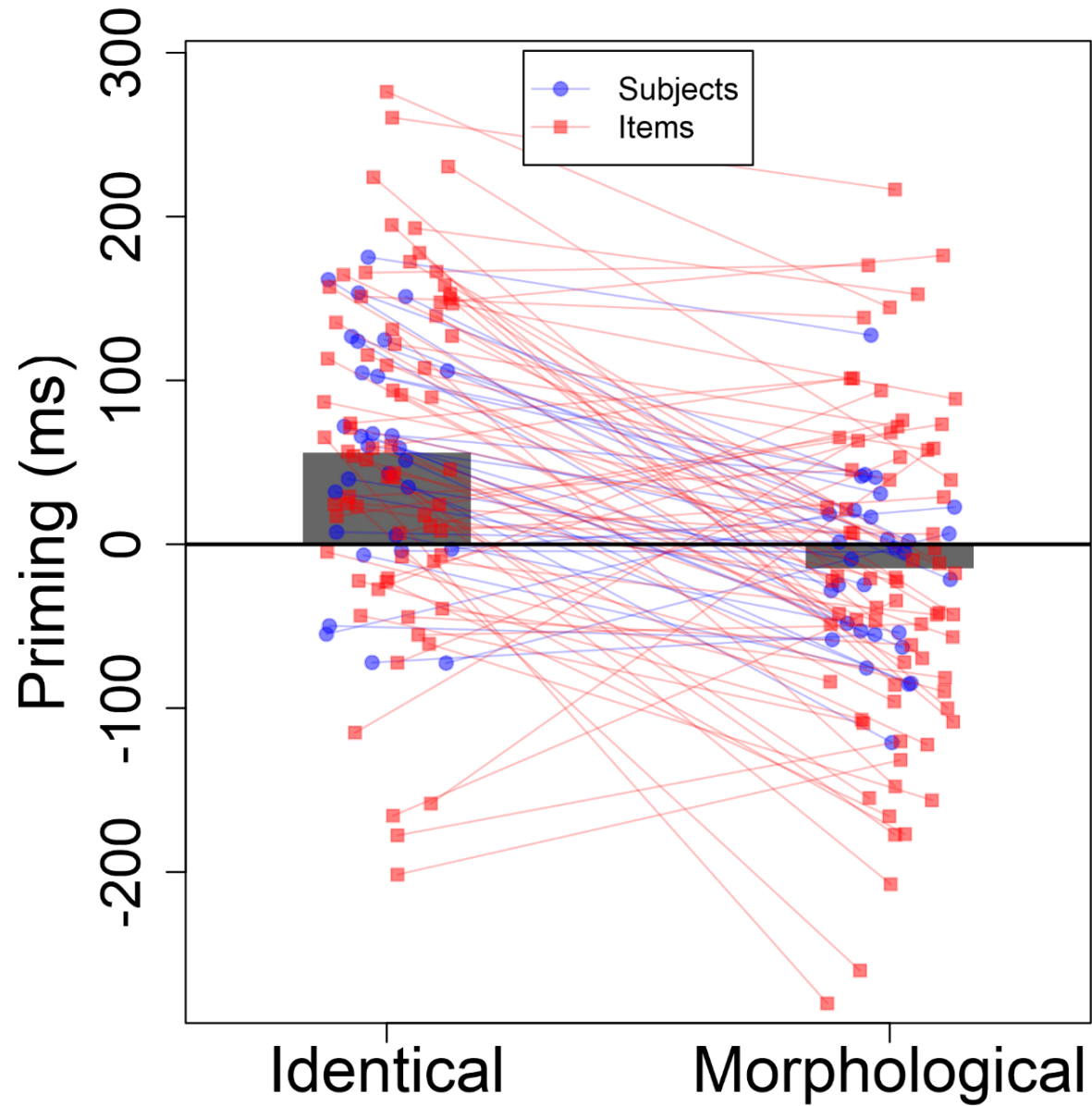
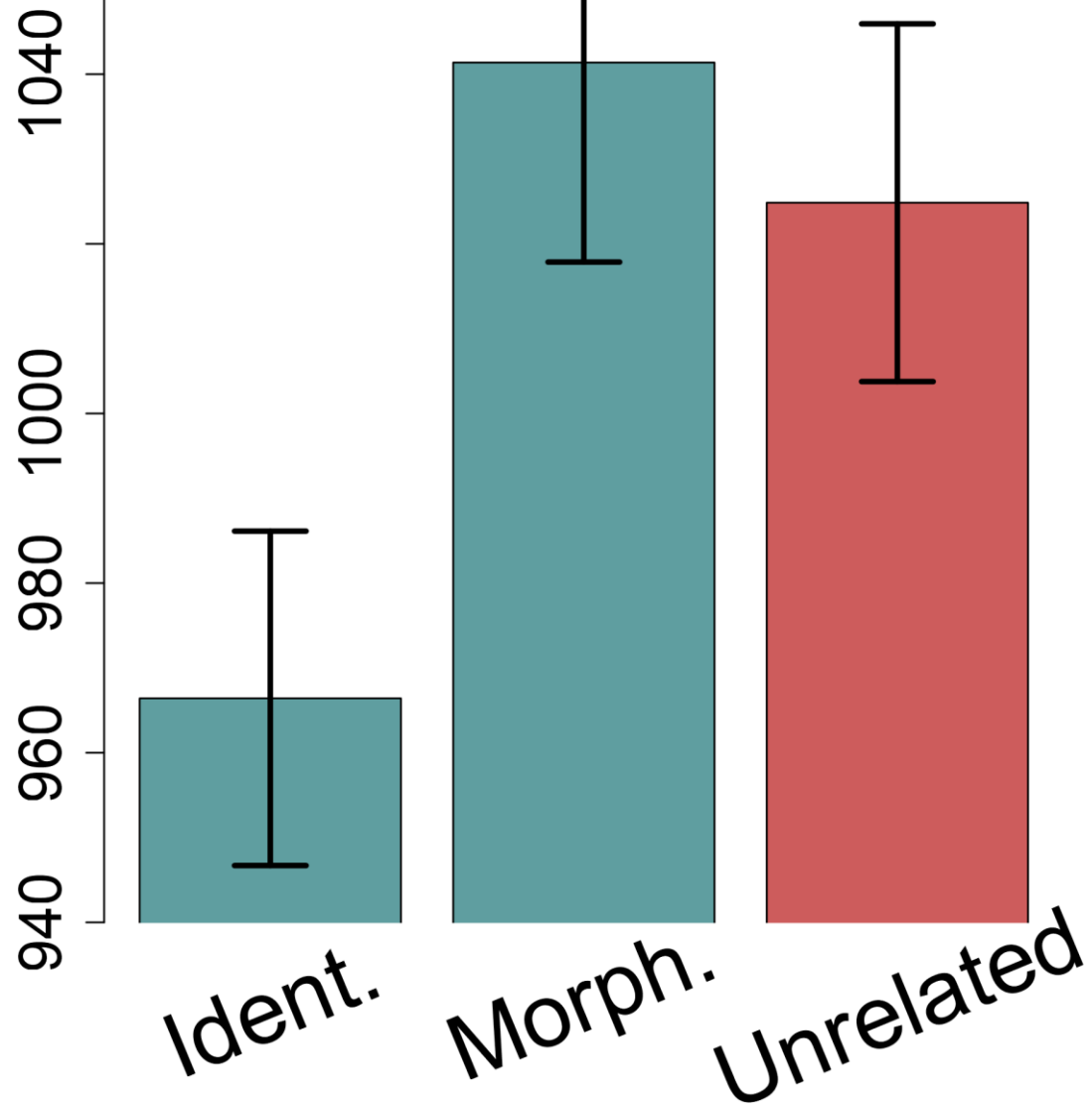
• *shi*^{Low} ... *shi*^{Low}

• *shi*^{Rising} ... *shi*^{Low}

• *hua*^{Falling} ... *shi*^{Low}

RT (ms)

N = 30



*shi*LOW

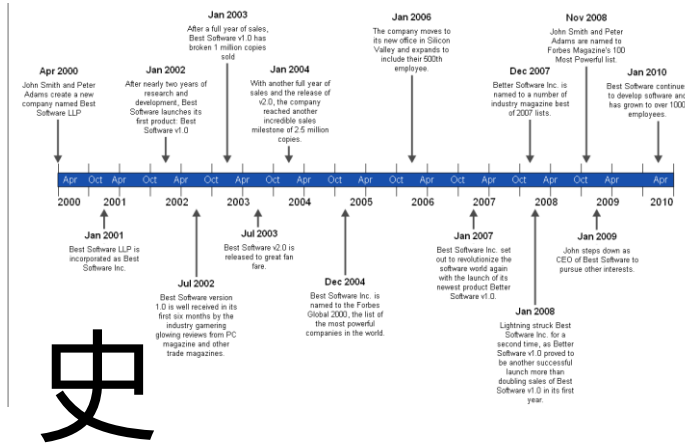
*shi*LOW



shiLow

START

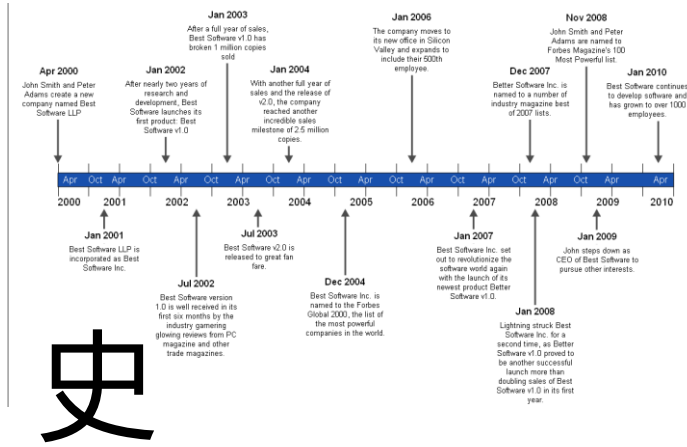
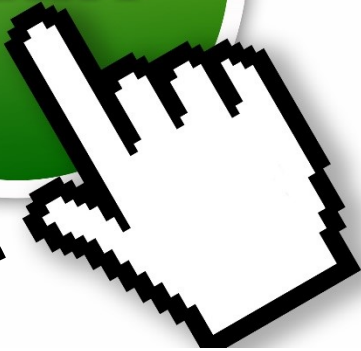
始



shilow

START

始

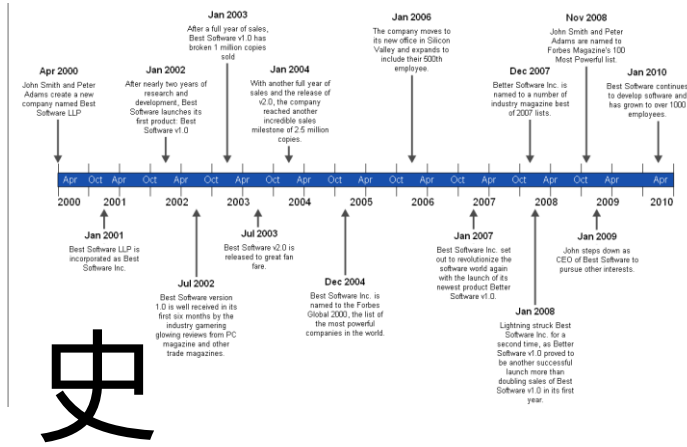


驶

shiLow

START

始



驶

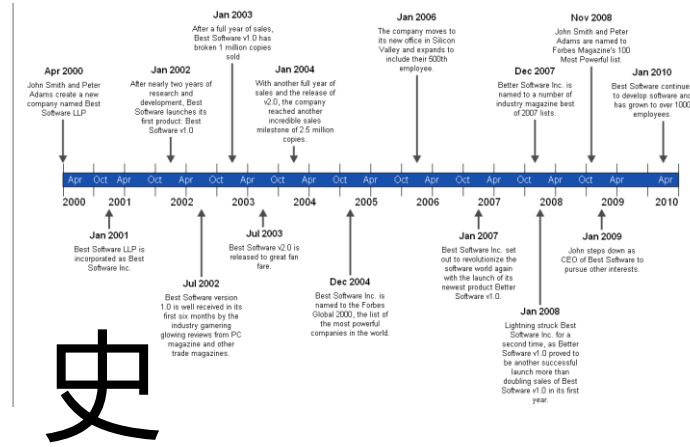
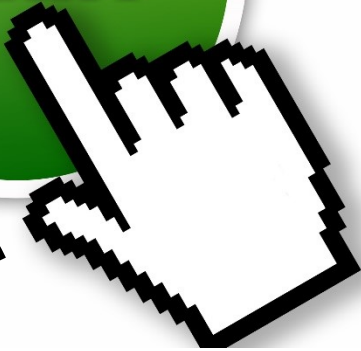


使

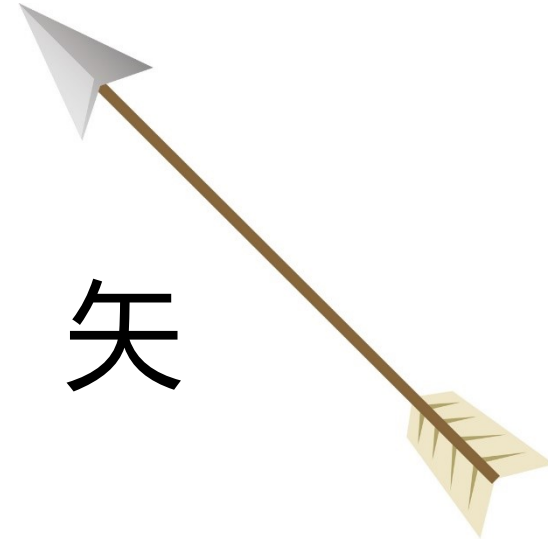
shilow

START

始



矢



驶

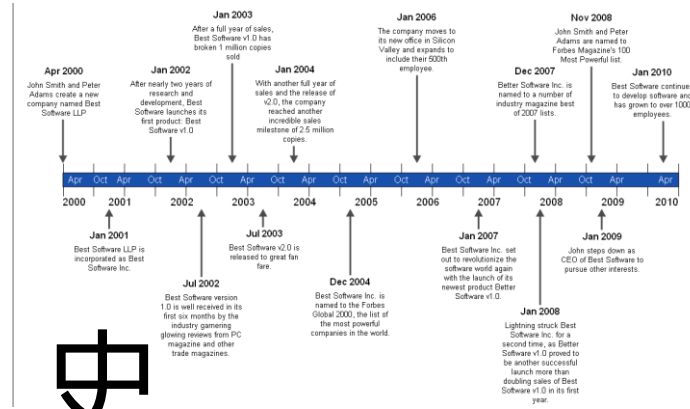
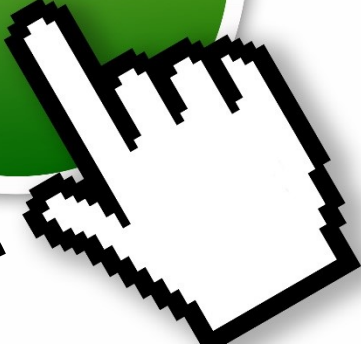


使

shilow

START

始



史



矢



驶

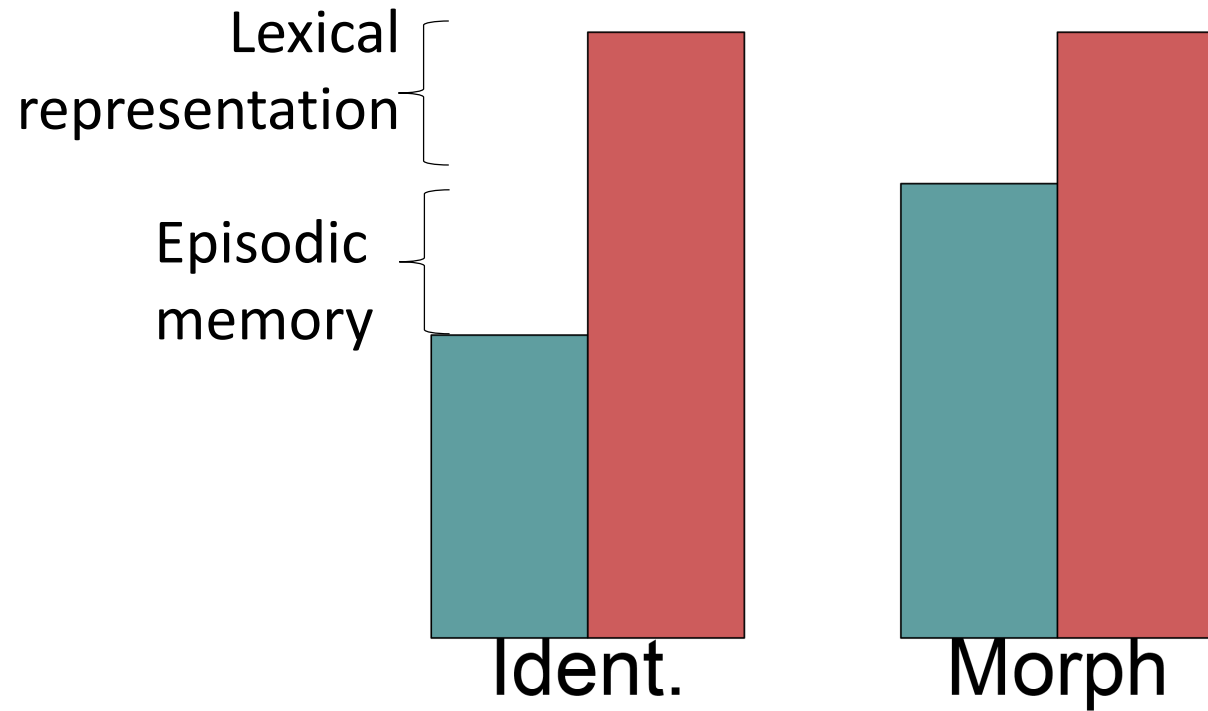


使



屎

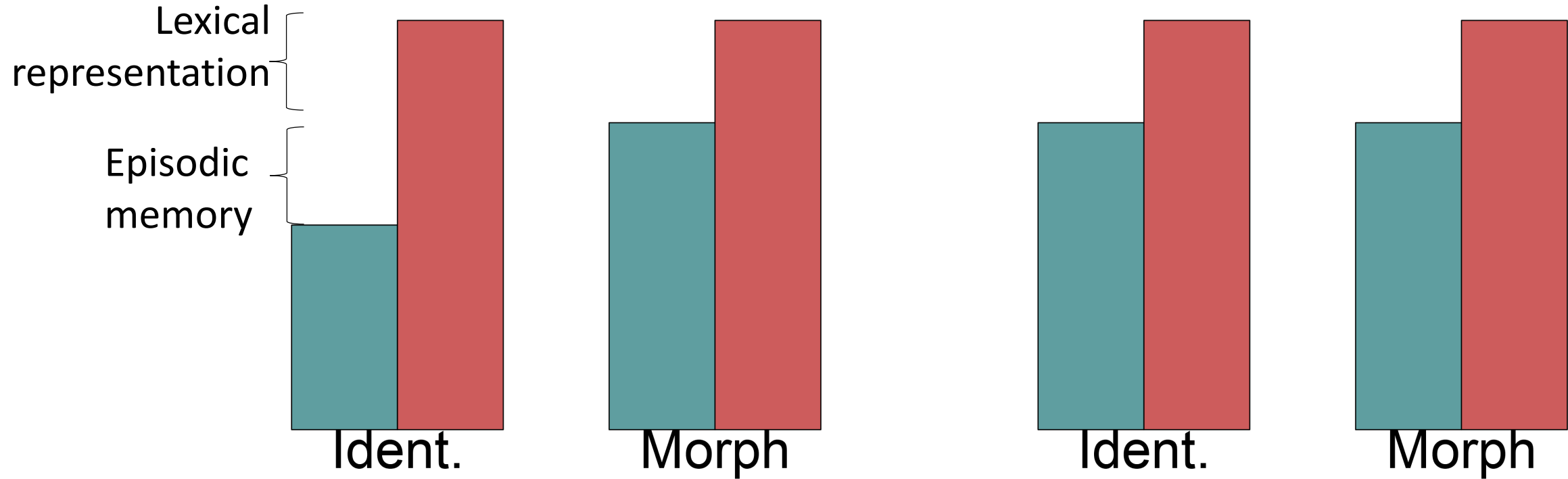
Same voice



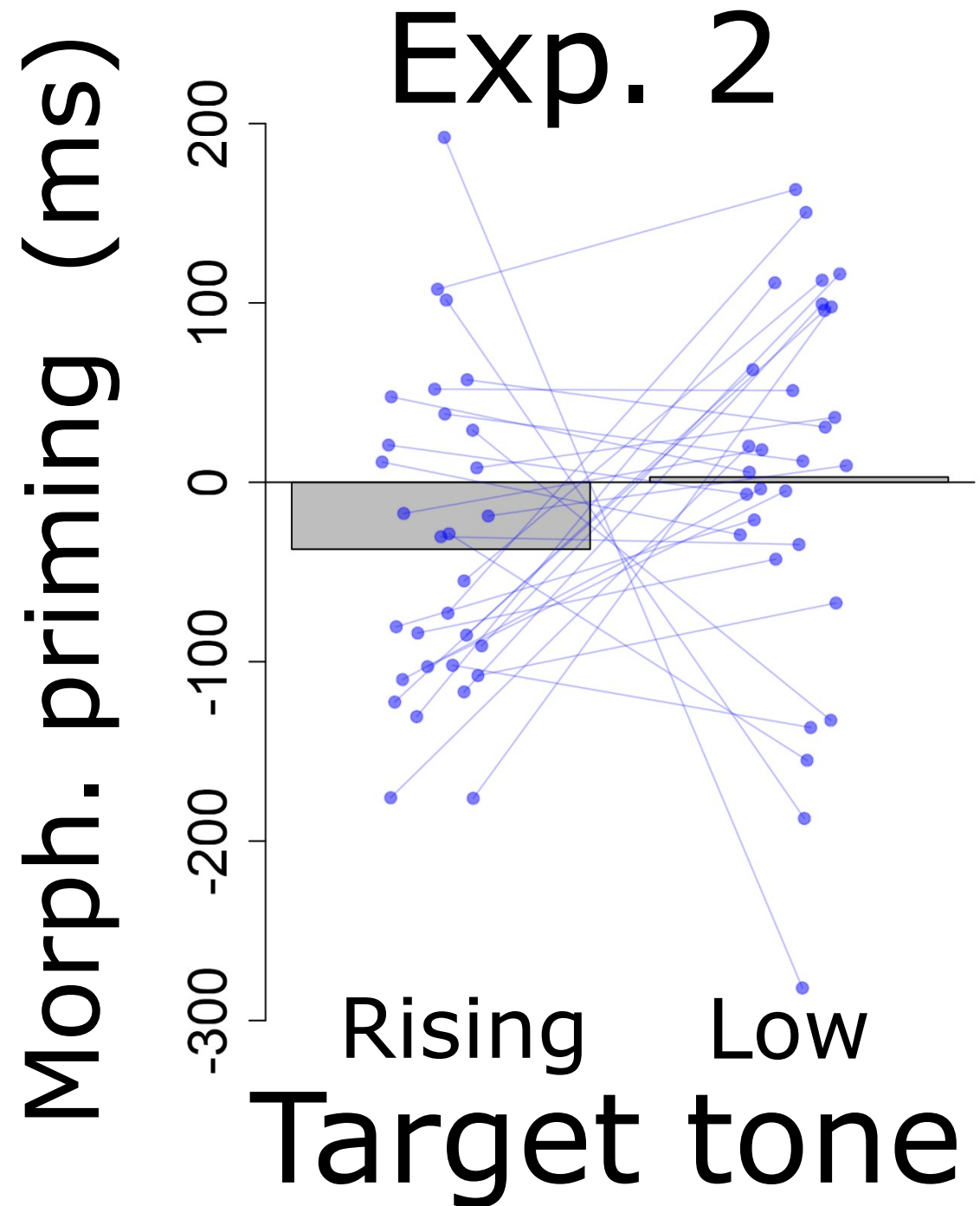
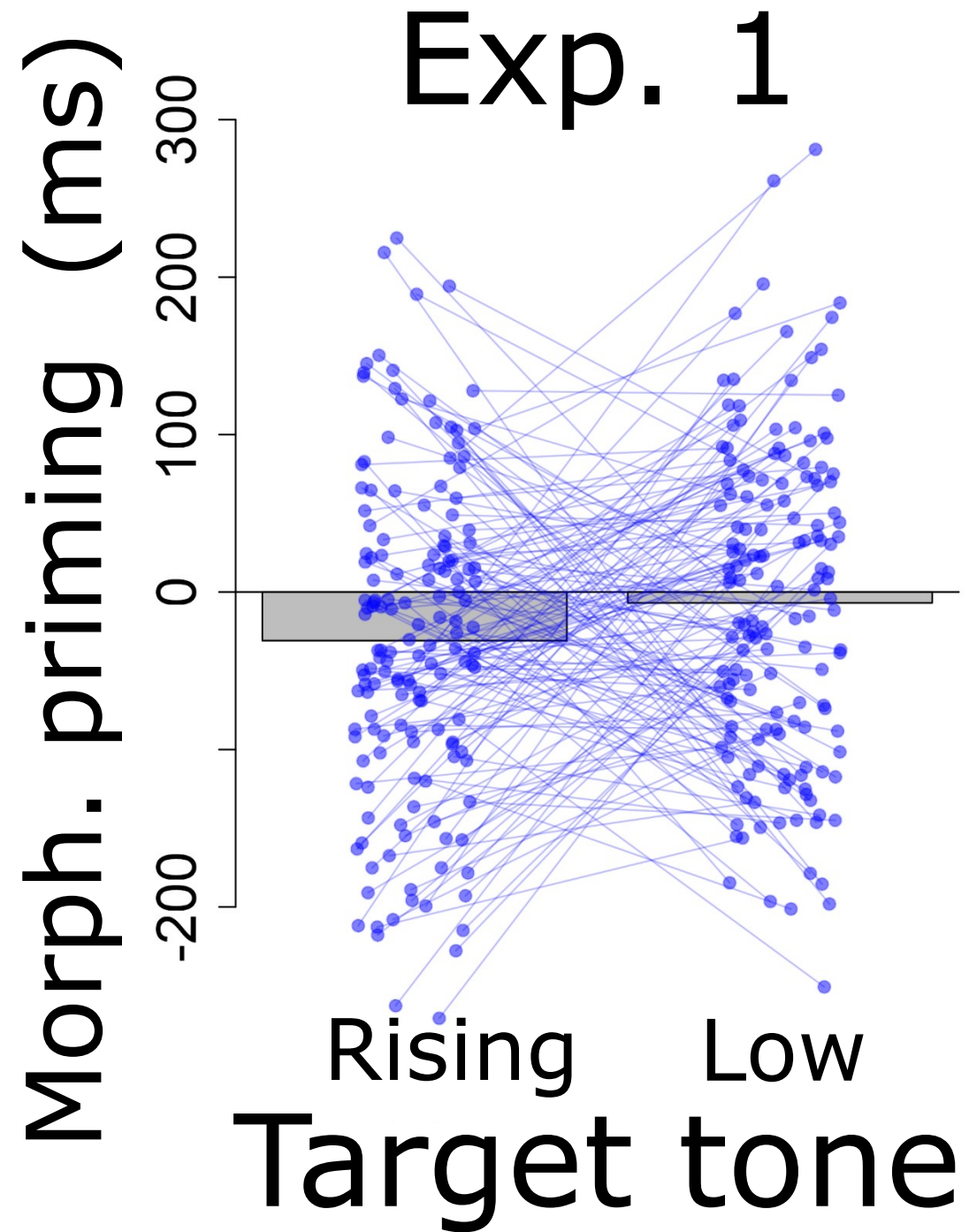
Based on Kouider & Dupoux (2009)

Same voice

New voice



Based on Kouider & Dupoux (2009)



Thank you!

多謝！

थैंक्यू

ధన్యవాదాలు